

---

## Product Datasheet

**Calpain 2 CAPN2 Antibody (monoclonal, 8I6)  
(orb507561)**

**Description**

Calpain 2 CAPN2 Antibody (monoclonal, 8I6)

**Species/Host**

Mouse

**Reactivity**

Human, Monkey, Mouse

**Conjugation**

Unconjugated

**Tested Applications**

FC, ICC, IF, IHC, WB

**Immunogen**

E. coli-derived human Calpain 2 recombinant protein (Position: R500-L700). Human Calpain 2 shares 93.5% and 92.5% amino acid (aa) sequence identity with mouse and rat Calpain 2, respectively.

**Form/Appearance**

Lyophilized

**Concentration**

Adding 0.2 ml of distilled water will yield a concentration of 500 µg/ml.

**Storage**

Store at -20°C for one year from date of receipt. After reconstitution, at 4°C for one month. It can also be aliquotted and stored frozen at -20°C for six months. Avoid repeated freeze-thaw cycles.

**Note**

For research use only

**Application notes**

Western blot, 0.1-0.5µg/ml Immunohistochemistry (Paraffin-embedded Section), 0.5-1µg/ml Immunocytochemistry/Immunofluorescence, 2µg/ml Flow Cytometry, 1-3µg/1x10<sup>6</sup> cells

**Isotype**

Mouse IgG2a

**Clonality**

Monoclonal

**MW**

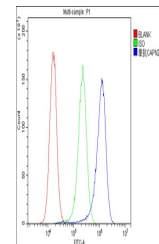
80 kDa

**Uniprot ID**
[P17655](#)
**Expiration Date**

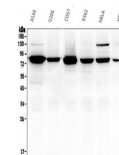
12 months from date of receipt.



Flow Cytometry analysis of A431 cells us...



Flow Cytometry analysis of U87 cells usi...



WB analysis of Calpain 2 using anti-Calp...