

Product Datasheet

SQSTM1/p62 Antibody (orb507551)

Description

SQSTM1/p62 Antibody

Species/Host

Rabbit

Reactivity

Human, Mouse, Rat

Conjugation

Unconjugated

Tested Applications

ICC, IF, IHC, WB

Immunogen

A synthetic peptide corresponding to a sequence at the N-terminus of human SQSTM1/p62 (69-96aa DEDGDLVAFSSDEELTMAMSYVKDDIFR), identical to the related mouse and rat sequences.

Form/Appearance

Lyophilized

Concentration

Adding 0.2 ml of distilled water will yield a concentration of 500 µg/ml.

Storage

Store at -20°C for one year from date of receipt. After reconstitution, at 4°C for one month. It can also be aliquotted and stored frozen at -20°C for six months. Avoid repeated freeze-thaw cycles.

Note

For research use only

Application notes

WB: The detection limit for SQSTM1/p62 is approximately 0.1ng/lane under reducing conditions. Tested Species: In-house tested species with positive results. By Heat: Boiling the paraffin sections in 10mM citrate buffer, pH6.0, for 20mins is required for the staining of formalin/paraffin sections. Other applications have not been tested. Optimal dilutions should be determined by end users. . Add 0.2ml of distilled water will yield a concentration of 500ug/ml.

Isotype

Rabbit IgG

Clonality

Polyclonal

MW

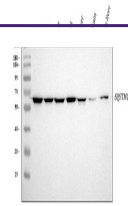
47687 MW

Uniprot ID
[Q13501](#)
Dilution Range

Immunohistochemistry (Paraffin-embedded Section), 0.5-1µg/ml, Human, Mouse, Rat, By HeatWestern blot, 0.1-0.5µg/ml, Human, Mouse, Monkey, RatImmunofluorescence, 2µg/ml, HumanImmunohistochemistry (Frozen Section), 0.5-1µg/ml, Mouse, RatImmunocytochemistry, 0.5-1µg/ml, Human

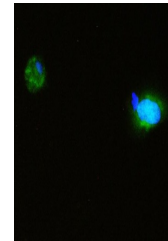
Expiration Date

12 months from date of receipt.



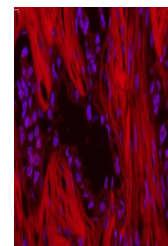
WB analysis of SQSTM1 using anti-SQSTM1

...



IF analysis of SQSTM1 using anti-SQSTM1

...



IF analysis of SQSTM1/p62 using anti-SQS...