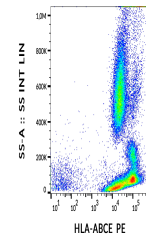


## Product Datasheet

### HLA-A+B+C+E antibody (PE) (orb507506)

<b>Description</b>	Mouse monoclonal antibody against HLA-A+B+C+E conjugated to PE
<b>Reactivity</b>	Human
<b>Conjugation</b>	PE
<b>Tested Applications</b>	FC
<b>Immunogen</b>	IFN-gamma-treated human melanoma cells Colo 38
<b>Target</b>	HLA-ABCE
<b>Preservatives</b>	Stabilizing phosphate buffered saline (PBS), pH 7.4, 15 mM sodium azide
<b>Concentration</b>	0.1 mg/ml
<b>Storage</b>	Store at 2-8°C. Protect from prolonged exposure to light. Do not freeze.
<b>Note</b>	For research use only
<b>Application notes</b>	Flow cytometry: Recommended dilution: 1-5 µg/ml.
<b>Isotype</b>	Mouse IgG1
<b>Clonality</b>	Monoclonal
<b>Purity</b>	Purified antibody is conjugated with R-phycoerythrin (PE) under optimum conditions. Unconjugated antibody and free fluorochrome are removed by size-exclusion chromatography.
<b>Dilution Range</b>	Flow cytometry: Recommended dilution: 1-5 µg/ml.
<b>Expiration Date</b>	12 months from date of receipt.



Flow cytometry surface staining pattern ...