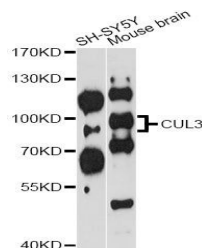


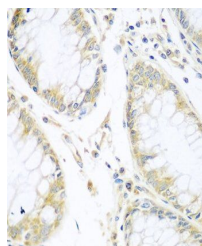
Product Datasheet

CUL3 antibody (orb507397)

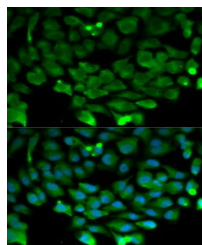
Description	Rabbit polyclonal antibody to CUL3
Reactivity	Human, Mouse, Rat
Conjugation	Unconjugated
Tested Applications	ICC, IF, WB
Immunogen	Recombinant fusion protein of human Cullin 3(NP_003581.1).
Preservatives	PBS with 0.01% thiomersal,50% glycerol,pH7.3.
Storage	Maintain refrigerated at 2-8°C for up to 2 weeks. For long term storage store at -20°C in small aliquots to prevent freeze-thaw cycles.
Note	For research use only
Isotype	IgG
Clonality	Polyclonal
MW	84KDa
Uniprot ID	Q13618
Dilution Range	WB 1:500-:2000, IHC-P: 1:50-:100, IF/ICC: 1:50:200
Expiration Date	12 months from date of receipt.



Western blot analysis of extracts of var...



Immunohistochemistry of paraffin-embedde...



Immunofluorescence analysis of HeLa cell...