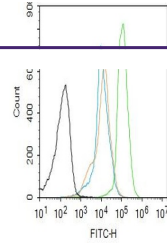

Product Datasheet

AMPK Beta 1 + AMPK Beta 2 (phospho-Ser182) antibody (orb506113)

Description

AMPK Beta 1 + AMPK Beta 2 (phospho-Ser182)


Species/Host

Rabbit

Reactivity

Mouse, Rat

Conjugation

Unconjugated

Tested Applications

FC, IHC-P

Immunogen

KLH conjugated synthesised phosphopeptide derived from human AMPK beta 1 around the phosphorylation site of Ser182 (SS(p-S)PP)

Target

phospho-AMPK beta 1 + AMPK beta 2 (Ser182/Ser184)

Preservatives

0.01M TBS(pH7.4) with 1% rAlbumin, 0.03% Proclin300 and 50% Glycerol.

Form/Appearance

Liquid

Concentration

1mg/ml

Storage

Maintain refrigerated at 2-8°C for up to 2 weeks. For long term storage store at -20°C in small aliquots to prevent freeze-thaw cycles.

Note

For research use only

Isotype

IgG

Clonality

Polyclonal

MW

30 kDa

Uniprot ID
[Q9Y478](https://www.uniprot.org/entry/Q9Y478)
Dilution Range

IHC-P=1:100-500, Flow-Cyt=2ug/Test, WB=1:500-2000, IHC-F=1:100-500, IF=1:100-500, ELISA=1:5000-10000

Expiration Date

12 months from date of receipt.

 Flow
cytometry of
Mouse
spleen.Primary
A...