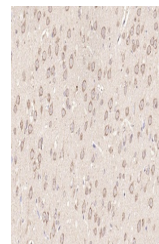


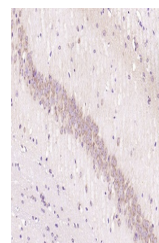
Product Datasheet

Tau antibody (orb500834)

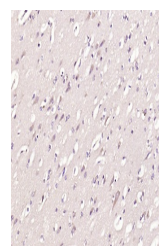
| | |
|----------------------------|--|
| Description | Tau antibody |
| Species/Host | Rabbit |
| Reactivity | Human, Mouse, Rat |
| Conjugation | Unconjugated |
| Tested Applications | FC, IHC-P, WB |
| Immunogen | KLH conjugated synthetic peptide derived from human Tau (1-100/758 aa) |
| Target | Tau |
| Preservatives | 0.01M TBS(pH7.4) with 1% rAlbumin, 0.03% Proclin300 and 50% Glycerol. |
| Form/Appearance | Liquid |
| Concentration | 1mg/ml |
| Storage | Shipped at 4°C. Store at -20°C for one year. Avoid repeated freeze/thaw cycles. |
| Note | For research use only |
| Isotype | IgG |
| Clonality | Polyclonal |
| MW | 52/79 kDa |
| Uniprot ID | P10636 |
| Dilution Range | WB=1:500-2000, IHC-P=1:100-500, Flow-Cyt=1µg/Test, IHC-F=1:100-500, IF=1:100-500 |
| Expiration Date | 12 months from date of receipt. |



IHC-P analysis of rat brain using Tau Po...



IHC-P analysis of mouse brain using Tau ...



IHC-P analysis of human brain using Tau ...