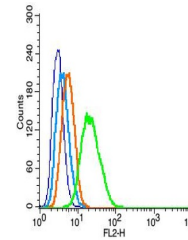


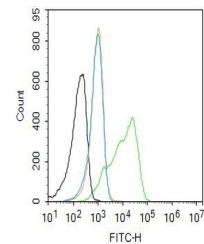
Product Datasheet

GFAP antibody (orb500829)

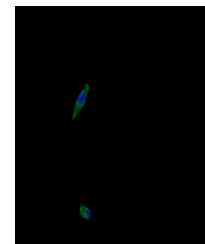
Description	GFAP antibody
Species/Host	Rabbit
Reactivity	Human, Mouse, Rat
Conjugation	Unconjugated
Tested Applications	FC, IF, IHC-P, WB
Immunogen	KLH conjugated synthetic peptide derived from human GFAP (51-150/432 aa)
Target	GFAP
Preservatives	0.01M TBS(pH7.4) with 1% rAlbumin, 0.03% Proclin300 and 50% Glycerol.
Form/Appearance	Liquid
Concentration	1mg/ml
Storage	Maintain refrigerated at 2-8°C for up to 2 weeks. For long term storage store at -20°C in small aliquots to prevent freeze-thaw cycles.
Note	For research use only
Isotype	IgG
Clonality	Polyclonal
MW	48 kDa
Uniprot ID	P14136
Dilution Range	WB=1:500-2000, IHC-P=1:200-1000, IF=1:200-800, Flow-Cyt=1µg/Test, IHC-F=1:200-1000, ELISA=1:5000-10000
Expiration Date	12 months from date of receipt.



Flow cytometry of RSC96(blue).Primary An...



Flow cytometry of U87MG.Primary Antibody...



ICC analysis of U87MG cell using GFAP po...