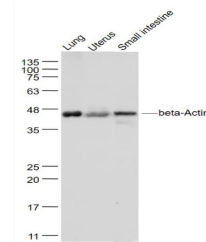


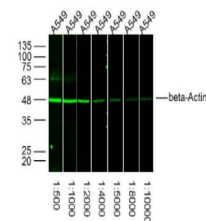
Product Datasheet

Beta-Actin (Loading Control) antibody (orb500817)

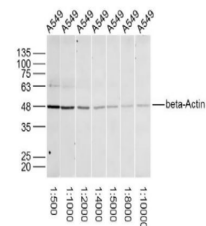
| | |
|----------------------------|--|
| Description | Beta-Actin (Loading Control) antibody |
| Species/Host | Rabbit |
| Reactivity | Hamster, Human, Mouse, Rat |
| Conjugation | Unconjugated |
| Tested Applications | ELISA, FC, ICC, WB |
| Immunogen | Synthetic MAP peptide derived from human beta-Actin (1-200/375 aa) |
| Target | beta-Actin (Loading Control) |
| Preservatives | 0.01M TBS(pH7.4) with 1% rAlbumin, 0.03% Proclin300 and 50% Glycerol. |
| Form/Appearance | Liquid |
| Concentration | 1mg/ml |
| Storage | Shipped at 4°C. Store at -20 °C for one year. Avoid repeated freeze/thaw cycles. |
| Note | For research use only |
| Isotype | IgG |
| Clonality | Polyclonal |
| MW | 42 kDa |
| Uniprot ID | P60709 |
| Dilution Range | WB=1:5000-50000, ICC=1:100, Flow-Cyt=1µg/Test, ELISA=1:5000-20000, IHC-P=1:100-500 |
| Expiration Date | 12 months from date of receipt. |



Western blot analysis of Mouse Lung Lysa...



Immunofluorescence analysis of Human A54...



western blot analysis of Human A549 Cell...