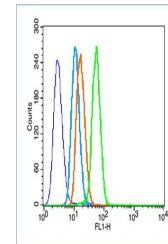


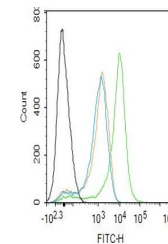
Product Datasheet

HIF-1 Alpha antibody (orb500810)

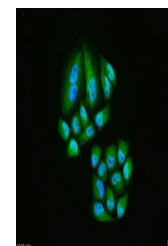
Description	HIF-1 Alpha antibody
Species/Host	Rabbit
Reactivity	Human, Rat
Conjugation	Unconjugated
Tested Applications	FC, ICC, IHC-P, WB
Immunogen	KLH conjugated synthetic peptide derived from middle of human HIF-1 Alpha (341-450/826 aa)
Target	HIF-1 Alpha
Preservatives	0.01M TBS(pH7.4) with 1% rAlbumin, 0.03% Proclin300 and 50% Glycerol.
Form/Appearance	Liquid
Concentration	1mg/ml
Storage	Maintain refrigerated at 2-8°C for up to 2 weeks. For long term storage store at -20°C in small aliquots to prevent freeze-thaw cycles.
Note	For research use only
Isotype	IgG
Clonality	Polyclonal
MW	92 kDa
Uniprot ID	Q16665
Dilution Range	WB=1:500-2000, IHC-P=1:100-500, ICC=1:100, Flow-Cyt=1µg/Test, IHC-F=1:100-500, IF=1:100-500, ELISA=1:5000-10000
Expiration Date	12 months from date of receipt.



Flow cytometry of HeLa (blue). Primary An...



Flow cytometry of Mouse spleen. Primary A...



ICC analysis of HeLa cell using HIF-1 Al...