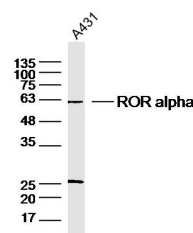


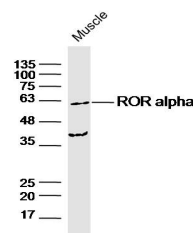
Product Datasheet

ROR Alpha antibody (orb500782)

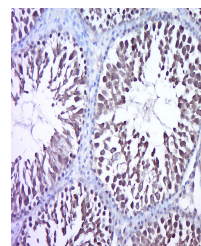
Description	ROR Alpha antibody
Species/Host	Rabbit
Reactivity	Human, Mouse, Rat
Conjugation	Unconjugated
Tested Applications	WB
Immunogen	KLH conjugated synthetic peptide derived from mouse ROR alpha
Target	ROR alpha
Preservatives	Preservative: 15mM Sodium Azide, Constituents: 1% rAlbumin, 0.01M PBS, pH 7.4
Form/Appearance	Liquid
Concentration	1mg/ml
Storage	Shipped at 4°C. Store at -20 °C for one year. Avoid repeated freeze/thaw cycles.
Note	For research use only
Isotype	IgG
Clonality	Polyclonal
MW	59 kDa
Uniprot ID	P35398
Dilution Range	WB=1:500-1000
Expiration Date	12 months from date of receipt.



Sample: A431(human) Cell Lysate at 40 ug...



Sample: Muscle (Mouse) Lysate at 40 ug P...



Paraformaldehyde-fixed, paraffin embedde...