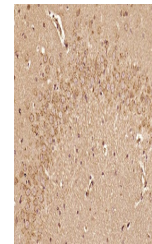


Product Datasheet

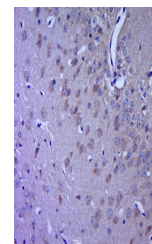
5HT2A Receptor antibody (orb500773)

Description	5HT2A Receptor antibody
Species/Host	Rabbit
Reactivity	Human, Mouse, Rat
Conjugation	Unconjugated
Tested Applications	IHC-P
Immunogen	KLH conjugated synthetic peptide derived from human 5HT2A Receptor (401-471/471 aa)
Target	5HT2A Receptor
Preservatives	0.01M TBS(pH7.4) with 1% rAlbumin, 0.03% Proclin300 and 50% Glycerol.
Form/Appearance	Liquid
Concentration	1mg/ml
Storage	Maintain refrigerated at 2-8°C for up to 2 weeks. For long term storage store at -20°C in small aliquots to prevent freeze-thaw cycles.
Note	For research use only
Isotype	IgG
Clonality	Polyclonal
MW	52 kDa
Uniprot ID	P28223
Dilution Range	IHC-P=1:100-500
Expiration Date	12 months from date of receipt.



IHC-P analysis of Rat brain using 5HT2A

...



IHC-P analysis of mouse brain tissue using 5HT2A