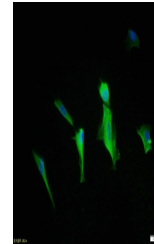


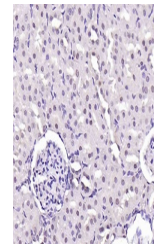
## Product Datasheet

### HIF-1 Alpha antibody (orb500743)

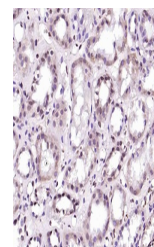
<b>Description</b>	HIF-1 Alpha antibody
<b>Species/Host</b>	Rabbit
<b>Reactivity</b>	Human, Rat
<b>Conjugation</b>	Unconjugated
<b>Tested Applications</b>	FC, ICC, IHC-P, WB
<b>Immunogen</b>	KLH conjugated synthetic peptide derived from human HIF-1 Alpha (661-760/826 aa)
<b>Target</b>	HIF-1 Alpha
<b>Preservatives</b>	Preservative: 15mM Sodium Azide, Constituents: 1% rAlbumin, 0.01M PBS, pH 7.4
<b>Form/Appearance</b>	Liquid
<b>Concentration</b>	1mg/ml
<b>Storage</b>	Maintain refrigerated at 2-8°C for up to 2 weeks. For long term storage store at -20°C in small aliquots to prevent freeze-thaw cycles.
<b>Note</b>	For research use only
<b>Isotype</b>	IgG
<b>Clonality</b>	Polyclonal
<b>MW</b>	92 kDa
<b>Uniprot ID</b>	<b>Q16665</b>
<b>Dilution Range</b>	WB=1:500-2000, IHC-P=1:100-500, ICC=1:100, Flow-Cyt=1µg/Test, IHC-F=1:100-500, IF=1:100-500, ELISA=1:5000-10000
<b>Expiration Date</b>	12 months from date of receipt.



ICC analysis of U-87MG cell using HIF-1 ...



IHC-P analysis of Rat kidney using HIF-1...



IHC-P analysis of Human kidney using HIF...