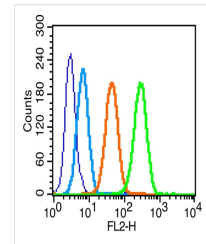


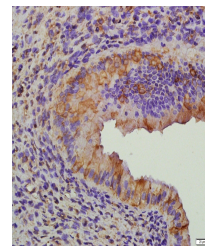
Product Datasheet

FSH Receptor antibody (orb500733)

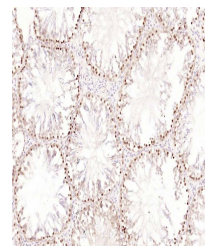
Description	FSH Receptor antibody
Species/Host	Rabbit
Reactivity	Human, Mouse, Rat
Conjugation	Unconjugated
Tested Applications	FC, IHC-P, WB
Immunogen	KLH conjugated synthetic peptide derived from human FSH receptor (21-100/695 aa)
Target	FSH receptor
Preservatives	0.01M TBS(pH7.4) with 1% rAlbumin, 0.03% Proclin300 and 50% Glycerol.
Form/Appearance	Liquid
Concentration	1mg/ml
Storage	Shipped at 4°C. Store at -20 °C for one year. Avoid repeated freeze/thaw cycles.
Note	For research use only
Isotype	IgG
Clonality	Polyclonal
MW	78 kDa
Uniprot ID	P23945
Dilution Range	WB=1:500-2000, IHC-P=1:100-500, Flow-Cyt=1ug/Test, IHC-F=1:100-500, IF=1:100-500
Expiration Date	12 months from date of receipt.



Flow cytometric analysis of MCF7 tissue ...



Immunohistochemical staining of paraffin...



Immunohistochemical staining of rat test...