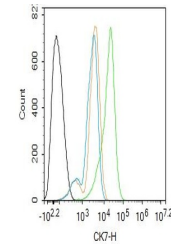


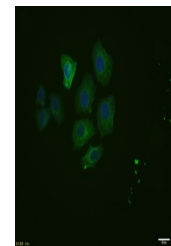
Product Datasheet

CK7 antibody (orb500618)

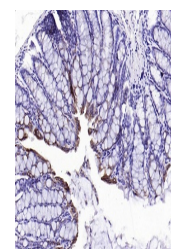
Description	CK7 antibody
Species/Host	Mouse
Reactivity	Human, Mouse, Rat
Conjugation	Unconjugated
Tested Applications	FC, ICC, IF, IHC-P, WB
Immunogen	KLH conjugated synthetic peptide derived from human CK7
Target	CK7
Preservatives	0.01M TBS(pH7.4) with 1% rAlbumin, 0.03% Proclin300 and 50% Glycerol.
Form/Appearance	Liquid
Concentration	1mg/ml
Storage	Maintain refrigerated at 2-8°C for up to 2 weeks. For long term storage store at -20°C in small aliquots to prevent freeze-thaw cycles.
Note	For research use only
Isotype	IgG
Clonality	Monoclonal
MW	54 kDa
Uniprot ID	P08729
Dilution Range	WB=1:500-2000, IHC-P=1:100-500, ICC=1:100, Flow-Cyt=1ug/Test
Expiration Date	12 months from date of receipt.



Flow cytometry of HeLa. Primary Antibody ...



ICC analysis of HepG2 cell using CK7 mon...



IHC-P analysis of Mouse colon using CK7 ...