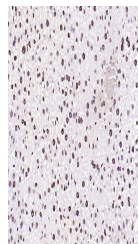


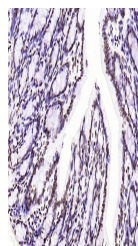
Product Datasheet

Histone H3(di Methyl K36) antibody (orb500366)

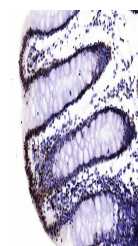
| | |
|----------------------------|---|
| Description | Histone H3(di Methyl K36) antibody |
| Species/Host | Mouse |
| Reactivity | Human, Mouse, Rat |
| Conjugation | Unconjugated |
| Tested Applications | IHC-P |
| Immunogen | KLH conjugated synthesised methylpeptide derived from human Histone H3 around the methylation site of di methyl K36 (GV(di Methyl-K)KP) |
| Target | Histone H3(di methyl K36) |
| Preservatives | 0.01M TBS(pH7.4) with 1% rAlbumin, 0.03% Proclin300 and 50% Glycerol. |
| Form/Appearance | Liquid |
| Concentration | 1mg/ml |
| Storage | Maintain refrigerated at 2-8°C for up to 2 weeks. For long term storage store at -20°C in small aliquots to prevent freeze-thaw cycles. |
| Note | For research use only |
| Isotype | IgG1 |
| Clonality | Monoclonal |
| MW | 15 kDa |
| CAS Number | Histone H3.1 |
| Uniprot ID | P68431 |
| Dilution Range | IHC-P=1:100-500 |
| Expiration Date | 12 months from date of receipt. |



IHC-P analysis of mouse liver using Hist...



IHC-P analysis of rat colon using Histon...



IHC-P analysis of human colon using Hist...