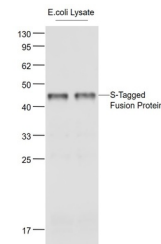


Product Datasheet

S-tag antibody (orb500331)

Description	S-tag antibody
Species/Host	Rabbit
Reactivity	All
Conjugation	Unconjugated
Tested Applications	WB
Immunogen	KLH conjugated synthetic peptide S-tag
Target	S-tag
Preservatives	0.01M TBS(pH7.4) with 1% rAlbumin, 0.03% Proclin300 and 50% Glycerol.
Form/Appearance	Liquid
Concentration	1mg/ml
Storage	Maintain refrigerated at 2-8°C for up to 2 weeks. For long term storage store at -20°C in small aliquots to prevent freeze-thaw cycles.
Note	For research use only
Isotype	IgG
Clonality	Polyclonal
Dilution Range	WB=1:1000-5000
Expiration Date	12 months from date of receipt.



Western blot: Lane 1: S-Tagged Fusion Protein