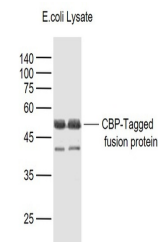


## Product Datasheet

### CBP Tag antibody (orb500314)

|                            |                                                                                                                                         |
|----------------------------|-----------------------------------------------------------------------------------------------------------------------------------------|
| <b>Description</b>         | CBP Tag antibody                                                                                                                        |
| <b>Species/Host</b>        | Mouse                                                                                                                                   |
| <b>Reactivity</b>          | All                                                                                                                                     |
| <b>Conjugation</b>         | Unconjugated                                                                                                                            |
| <b>Tested Applications</b> | WB                                                                                                                                      |
| <b>Immunogen</b>           | KLH conjugated synthetic peptide CBP Tag                                                                                                |
| <b>Target</b>              | CBP Tag                                                                                                                                 |
| <b>Preservatives</b>       | 0.01M TBS(pH7.4) with 1% rAlbumin, 0.03% Proclin300 and 50% Glycerol.                                                                   |
| <b>Form/Appearance</b>     | Liquid                                                                                                                                  |
| <b>Concentration</b>       | 1mg/ml                                                                                                                                  |
| <b>Storage</b>             | Maintain refrigerated at 2-8°C for up to 2 weeks. For long term storage store at -20°C in small aliquots to prevent freeze-thaw cycles. |
| <b>Note</b>                | For research use only                                                                                                                   |
| <b>Isotype</b>             | IgG                                                                                                                                     |
| <b>Clonality</b>           | Monoclonal                                                                                                                              |
| <b>Dilution Range</b>      | WB=1:1000-5000                                                                                                                          |
| <b>Expiration Date</b>     | 12 months from date of receipt.                                                                                                         |



Western blot: Lane 1:CBP-Tagged Fusion Pr...