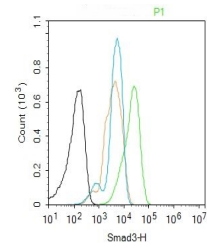


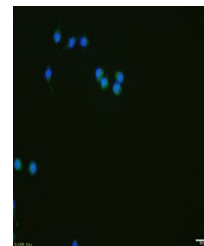
Product Datasheet

Smad3 antibody (orb500265)

Description	Smad3 antibody
Species/Host	Rabbit
Reactivity	Human, Mouse, Rat
Conjugation	Unconjugated
Tested Applications	FC, ICC, IHC-P, WB
Immunogen	Recombinant human Smad3 protein (1-200aa)
Target	Smad3
Preservatives	0.01M TBS(pH7.4) with 1% rAlbumin, 0.03% Proclin300 and 50% Glycerol.
Form/Appearance	Liquid
Concentration	1mg/1ml
Storage	Shipped at 4°C. Store at -20 °C for one year. Avoid repeated freeze/thaw cycles.
Note	For research use only
Isotype	IgG
Clonality	Recombinant
MW	47 kDa
Uniprot ID	P84022
Dilution Range	WB=1:500-2000, IHC-P=1:50-200, ICC=1:100, Flow-Cyt=1ug/Test, IHC-F=1:50-200, IF=1:50-200
Expiration Date	12 months from date of receipt.

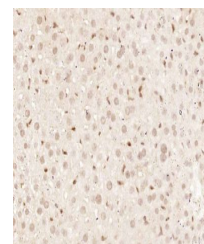


Flow cytometric analysis of HUVEC cell u...



Immunofluorescence analysis of Raw264.7

...



Immunohistochemical staining of mouse li...