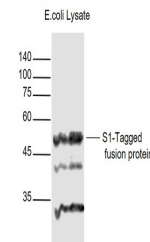


Product Datasheet

S1-Tag antibody (orb500011)

Description	S1-Tag antibody
Species/Host	Rabbit
Reactivity	All
Conjugation	Unconjugated
Tested Applications	WB
Immunogen	KLH conjugated synthetic peptide S1-Tag
Target	S1-Tag
Preservatives	0.01M TBS(pH7.4) with 1% rAlbumin, 0.03% Proclin300 and 50% Glycerol.
Form/Appearance	Liquid
Concentration	1mg/ml
Storage	Shipped at 4°C. Store at -20°C for one year. Avoid repeated freeze/thaw cycles.
Note	For research use only
Isotype	IgG
Clonality	Polyclonal
Dilution Range	WB=1:1000-5000
Expiration Date	12 months from date of receipt.



Western blot: Lane 1: S1-Tagged Fusion Pro...