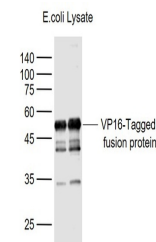


Product Datasheet

VP16 Tag antibody (orb499939)

Description	VP16 Tag antibody
Species/Host	Rabbit
Reactivity	All
Conjugation	Unconjugated
Tested Applications	WB
Immunogen	KLH conjugated synthetic peptide derived from HSV-1 VP16 (391-490/490aa)
Target	VP16 tag
Preservatives	0.01M TBS(pH7.4) with 1% rAlbumin, 0.03% Proclin300 and 50% Glycerol.
Form/Appearance	Liquid
Concentration	1mg/ml
Storage	Maintain refrigerated at 2-8°C for up to 2 weeks. For long term storage store at -20°C in small aliquots to prevent freeze-thaw cycles.
Note	For research use only
Isotype	IgG
Clonality	Polyclonal
Uniprot ID	P04486
Dilution Range	WB=1:1000-5000
Expiration Date	12 months from date of receipt.



Western blot: Lane 1:VP16-Tagged Fusion P...