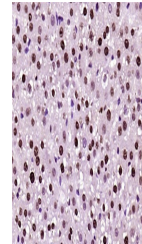


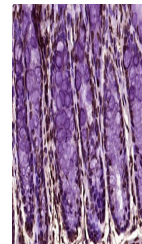
Product Datasheet

Histone H3(di Methyl K27) antibody (orb499667)

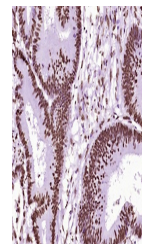
Description	Histone H3(di Methyl K27) antibody
Species/Host	Mouse
Reactivity	Human, Mouse, Rat
Conjugation	Unconjugated
Tested Applications	IHC-P, WB
Immunogen	KLH conjugated synthesised methylpeptide derived from human Histone H3 around the methylation site of di methyl K27 (AR(di Methyl-K)SA)
Target	Histone H3(di methyl K27)
Preservatives	0.01M TBS(pH7.4) with 1% rAlbumin, 0.03% Proclin300 and 50% Glycerol.
Form/Appearance	Liquid
Concentration	1mg/ml
Storage	Maintain refrigerated at 2-8°C for up to 2 weeks. For long term storage store at -20°C in small aliquots to prevent freeze-thaw cycles.
Note	For research use only
Isotype	IgG1
Clonality	Monoclonal
MW	15 kDa
CAS Number	Histone H3.1
Uniprot ID	P68431
Dilution Range	WB=1:500-2000, IHC-P=1:100-500
Expiration Date	12 months from date of receipt.



IHC-P analysis of Rat liver using Histone...



IHC-P analysis of Mouse colon using Hist...



IHC-P analysis of Human colon carcinoma ...