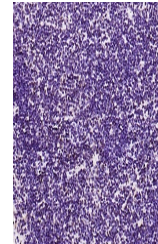


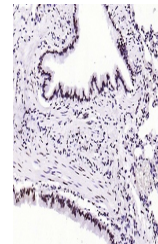
Product Datasheet

Beclin 1 antibody (orb499660)

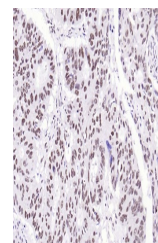
Description	Beclin 1 antibody
Species/Host	Mouse
Reactivity	Human, Mouse, Rat
Conjugation	Unconjugated
Tested Applications	IHC-P, WB
Immunogen	KLH conjugated synthetic peptide derived from human Beclin 1
Target	Beclin 1
Preservatives	0.01M TBS(pH7.4) with 1% rAlbumin, 0.03% Proclin300 and 50% Glycerol.
Form/Appearance	Liquid
Concentration	1mg/ml
Storage	Shipped at 4°C. Store at -20°C for one year. Avoid repeated freeze/thaw cycles.
Note	For research use only
Isotype	IgG
Clonality	Monoclonal
MW	50 kDa
Uniprot ID	Q14457
Dilution Range	WB=1:500-1000, IHC-P=1:100-500
Expiration Date	12 months from date of receipt.



IHC-P analysis of mouse lymphoid using B...



IHC-P analysis of rat lung using Beclin ...



IHC-P analysis of human colon carcinoma ...