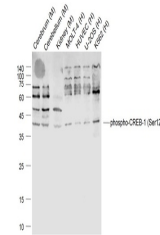


Product Datasheet

CREB-1 (phospho-Ser121) antibody (orb4982)

Description	CREB-1 (phospho-Ser121) antibody
Species/Host	Rabbit
Reactivity	Human, Mouse
Conjugation	Unconjugated
Tested Applications	FC, WB
Immunogen	KLH conjugated Synthesised phosphopeptide derived from human CREB-1 around the phosphorylation site of Ser121 (TD(p-S)QK)
Target	phospho-CREB-1 (Ser121)
Preservatives	0.01M TBS(pH7.4) with 1% rAlbumin, 0.03% Proclin300 and 50% Glycerol.
Form/Appearance	Liquid
Concentration	1mg/ml
Storage	Maintain refrigerated at 2-8°C for up to 2 weeks. For long term storage store at -20°C in small aliquots to prevent freeze-thaw cycles.
Note	For research use only
Isotype	IgG
Clonality	Polyclonal
MW	37 kDa
Uniprot ID	P16220
Dilution Range	WB=1:500-2000, Flow-Cyt=1µg/Test, IHC-P=1:100-500, IHC-F=1:100-500, IF=1:100-500, ELISA=1:5000-10000
Expiration Date	12 months from date of receipt.



Western blot: Lane 1: Cerebrum (Mouse); Lan...