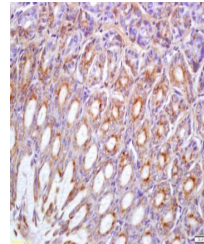


Product Datasheet

MET (phospho-Tyr1234/1235) antibody (orb4944)

| | |
|----------------------------|---|
| Description | MET (phospho-Tyr1234/1235) antibody |
| Species/Host | Rabbit |
| Reactivity | Human, Mouse |
| Conjugation | Unconjugated |
| Tested Applications | ELISA, IF, IHC-Fr, IHC-P, WB |
| Immunogen | KLH conjugated synthesised phosphopeptide derived from human MET around the phosphorylation site of Tyr1234/1235 (KE(p-Y)(p-Y)SV) |
| Target | Phospho-Met (Tyr1234 + Tyr1235) |
| Preservatives | 0.01M TBS(pH7.4) with 1% rAlbumin, 0.03% Proclin300 and 50% Glycerol. |
| Form/Appearance | Liquid |
| Concentration | 1mg/ml |
| Storage | Shipped at 4°C. Store at -20 °C for one year. Avoid repeated freeze/thaw cycles. |
| Note | For research use only |
| Isotype | IgG |
| Clonality | Polyclonal |
| MW | 33/123/156 kDa |
| Uniprot ID | P08581 |
| Expiration Date | 12 months from date of receipt. |



Immunohistochemical staining of mouse st...