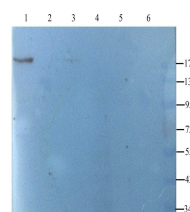


Product Datasheet

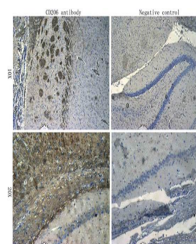
CD206 antibody (orb4941)

Description	CD206 antibody
Species/Host	Rabbit
Conjugation	Unconjugated
Tested Applications	ELISA, ICC, IF, IHC-P, WB
Immunogen	KLH conjugated synthetic peptide derived from human CD206. Please contact us for the exact immunogen sequence. The peptide is available as orb374778.
Target	CD206
Form/Appearance	10 mM PBS, 0.02% sodium azide
Concentration	- 100 µg (in 200 µl): 0.5 mg/ml- 200 µg (in 400 µl): 0.5 mg/ml
Storage	Maintain refrigerated at 2-8°C for up to 2 weeks. For long term storage store at -20°C in small aliquots to prevent freeze-thaw cycles.
Note	For research use only
Isotype	IgG
Clonality	Polyclonal
Purity	Polyclonal antibodies are purified by peptide affinity chromatography
MW	166 kDa
Uniprot ID	P22897 , Q61830
NCBI	002438 , 11 , 31 , 002429
Entrez	4360
Dilution Range	WB: 1:500-1000, IHC-P: 1:100-500, IF/ICC: 1:400
Expiration Date	12 months from date of receipt.

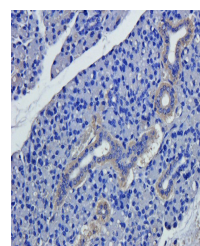


Wb analysis of rat lymph node (lane 1),

...



Immunohistochemical analysis of paraffin...



Immunohistochemical staining of mouse ly...