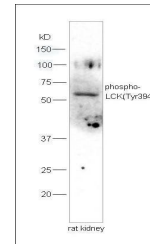


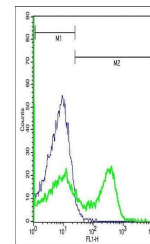
## Product Datasheet

### LCK (phospho-Tyr394) antibody (orb4931)

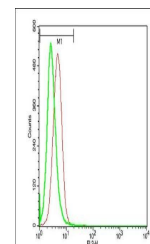
<b>Description</b>	LCK (phospho-Tyr394) antibody
<b>Species/Host</b>	Rabbit
<b>Reactivity</b>	Human, Rat
<b>Conjugation</b>	Unconjugated
<b>Tested Applications</b>	ELISA, IF, IHC-Fr, IHC-P, WB
<b>Immunogen</b>	KLH conjugated Synthesised phosphopeptide derived from human LCK around the phosphorylation site of Tyr394 (NE(p-Y)TA)
<b>Target</b>	phospho-LCK (Tyr394)
<b>Preservatives</b>	0.01M TBS(pH7.4) with 1% rAlbumin, 0.03% Proclin300 and 50% Glycerol.
<b>Form/Appearance</b>	Liquid
<b>Concentration</b>	1mg/ml
<b>Storage</b>	Shipped at 4°C. Store at -20 °C for one year. Avoid repeated freeze/thaw cycles.
<b>Note</b>	For research use only
<b>Isotype</b>	IgG
<b>Clonality</b>	Polyclonal
<b>MW</b>	56 kDa
<b>Uniprot ID</b>	<b>P06239</b>
<b>Expiration Date</b>	12 months from date of receipt.



Western blot analysis of rat kidney lysa...



Flow cytometric analysis of spleen cell ...



Flow cytometric analysis of U937 cell us...