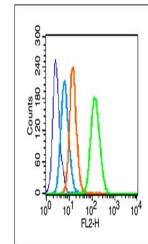


Product Datasheet

c-Jun (phospho-Tyr170) antibody (orb4923)

Description	c-Jun (phospho-Tyr170) antibody
Species/Host	Rabbit
Reactivity	Human
Conjugation	Unconjugated
Tested Applications	FC
Immunogen	KLH conjugated Synthesised phosphopeptide derived from human c-Jun around the phosphorylation site of Tyr170 (PV(p-Y)AN)
Target	phospho-c-Jun (Tyr170)
Preservatives	0.01M TBS(pH7.4) with 1% rAlbumin, 0.03% Proclin300 and 50% Glycerol.
Form/Appearance	Liquid
Concentration	1mg/ml
Storage	Maintain refrigerated at 2-8°C for up to 2 weeks. For long term storage store at -20°C in small aliquots to prevent freeze-thaw cycles.
Note	For research use only
Isotype	IgG
Clonality	Polyclonal
MW	36 kDa
Uniprot ID	P05412
Dilution Range	Flow-Cyt=1µg/Test
Expiration Date	12 months from date of receipt.



Flow cytometry of HepG2 (blue line). Prima...