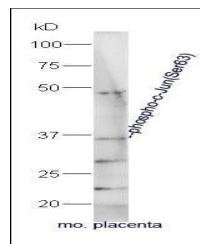


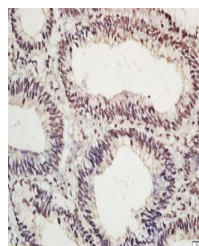
Product Datasheet

c-Jun(phospho-Ser63) antibody (orb4917)

Description	c-Jun(phospho-Ser63) antibody
Species/Host	Rabbit
Reactivity	Human, Mouse, Rat
Conjugation	Unconjugated
Tested Applications	FC, IHC-P
Immunogen	KLH conjugated Synthesised phosphopeptide derived from human c-Jun around the phosphorylation site of Ser63 (LT(p-S)PD)
Target	phospho-c-Jun (Ser63)
Preservatives	0.01M TBS(pH7.4) with 1% rAlbumin, 0.03% Proclin300 and 50% Glycerol.
Form/Appearance	Liquid
Concentration	1mg/ml
Storage	Shipped at 4°C. Store at -20 °C for one year. Avoid repeated freeze/thaw cycles.
Note	For research use only
Isotype	IgG
Clonality	Polyclonal
MW	36 kDa
Uniprot ID	P05412
Dilution Range	IHC-P=1:100-500, Flow-Cyt=0.2µg /Test, IHC-F=1:100-500, IF=1:100-500, ELISA=1:5000-10000
Expiration Date	12 months from date of receipt.



Western blot analysis of mouse placenta ...



Immunohistochemical staining of mouse sp...