

Product Datasheet

CDC25A antibody (orb49071)

Description Rabbit polyclonal antibody to CDC25A

Reactivity Human, Mouse, Rat

Conjugation Unconjugated

Tested Applications ICC, IF, IHC, WB

Immunogen Recombinant fusion protein of human CDC25A(NP_001780.2).

Preservatives PBS with 0.01% thiomersal,50% glycerol,pH7.3.

Concentration 1 mg/ml

Storage Maintain refrigerated at 2-8°C for up to 2 weeks. For long term storage store at -20°C in small aliquots to prevent freeze-thaw cycles.

Note For research use only

Isotype IgG

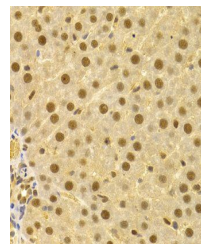
Clonality Polyclonal

MW 70KDa

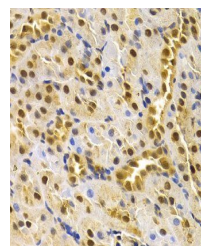
Uniprot ID [P30304](#)

Dilution Range WB: 1:500-2000, IHC-P: 1:50-200

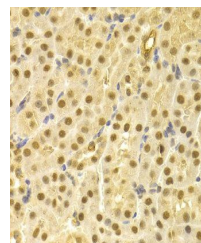
Expiration Date 12 months from date of receipt.



Immunohistochemistry of paraffin-embedde...



Immunohistochemistry of paraffin-embedde...



Immunohistochemistry of paraffin-embedde...