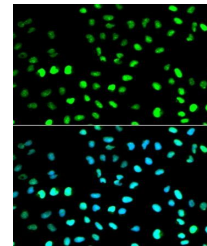


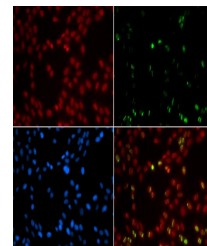
Product Datasheet

SUMO1 antibody (orb48552)

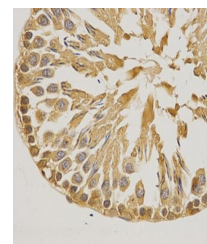
Description	Rabbit polyclonal antibody to SUMO1
Reactivity	Human, Mouse, Rat
Conjugation	Unconjugated
Tested Applications	ICC, IF, IHC, IP, WB
Immunogen	Recombinant fusion protein of human SUMO1(NP_003343.1).
Preservatives	PBS with 0.02% sodium azide,50% glycerol,pH7.3.
Concentration	1 mg/ml
Storage	Store at -20°C. Avoid freeze / thaw cycles.
Note	For research use only
Isotype	IgG
Clonality	Polyclonal
MW	80KDa
Uniprot ID	P63165
Dilution Range	WB: 1:500-2000, IHC-P: 1:50-100 ICC1:50-200, IF/ICC: 1:50-200, IP: 1:50-100
Expiration Date	12 months from date of receipt.



Immunofluorescence analysis of MCF7 cell...



Immunofluorescence analysis of U2OS cell...



IHC-P staining of rat testis tissue usin...