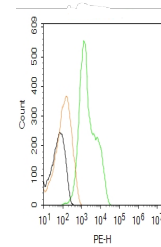


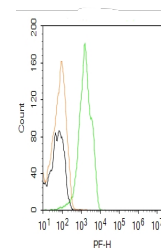
## Product Datasheet

### CX3CR1 antibody (PE) (orb485433)

<b>Description</b>	CX3CR1 antibody (PE)
<b>Species/Host</b>	Rabbit
<b>Reactivity</b>	Mouse, Rat
<b>Conjugation</b>	PE
<b>Tested Applications</b>	FC
<b>Immunogen</b>	KLH conjugated synthetic peptide derived from human CX3CR1 (151-250/355 aa)
<b>Target</b>	CX3CR1
<b>Preservatives</b>	0.01M TBS(pH7.4) with 1% rAlbumin, 0.03% Proclin300 and 50% Glycerol.
<b>Form/Appearance</b>	Liquid
<b>Concentration</b>	1mg/ml
<b>Storage</b>	Shipped at 4°C. Store at -20 °C for one year. Avoid repeated freeze/thaw cycles.
<b>Note</b>	For research use only
<b>Application notes</b>	Optimal dilutions/concentrations should be determined by the end user
<b>Isotype</b>	IgG
<b>Clonality</b>	Polyclonal
<b>Purity</b>	Affinity purified by Protein A
<b>Uniprot ID</b>	<b>P49238</b>
<b>Dilution Range</b>	Flow-Cyt = 2ug/Test
<b>Expiration Date</b>	12 months from date of receipt.



Blank control: U251. Primary Antibody (g...



Blank control: THP-1. Primary Antibody (...)