

## Product Datasheet

### MTTP antibody (orb48462)

**Description** Rabbit polyclonal to MTTP

**Reactivity** Mouse, Rat

**Conjugation** Unconjugated

**Tested Applications** WB

**Immunogen** Recombinant fusion protein of human MTTP(NP\_000244.2).

**Preservatives** PBS with 0.05% proclin300,50% glycerol,pH7.3.

**Storage** Maintain refrigerated at 2-8°C for up to 2 weeks. For long term storage store at -20°C in small aliquots to prevent freeze-thaw cycles.

**Note** For research use only

**Isotype** IgG

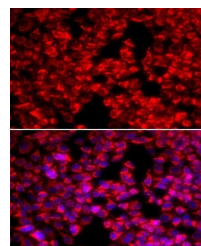
**Clonality** Polyclonal

**MW** 99kDa

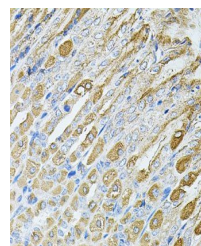
**Uniprot ID** [P55157](#)

**Dilution Range** IHC-P: 1:50-200, IF/ICC: 1:50-200

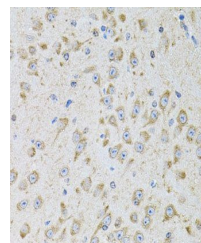
**Expiration Date** 12 months from date of receipt.



Immunofluorescence analysis of U2OS cell...



Immunohistochemistry of paraffin-embedde...



Immunohistochemistry of paraffin-embedde...