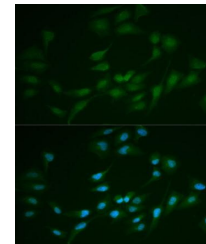


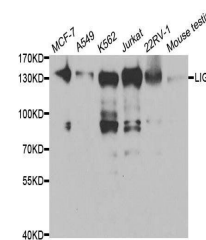
Product Datasheet

LIG1 antibody (orb48438)

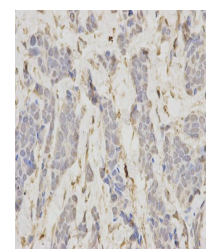
Description	Rabbit polyclonal antibody to LIG1
Reactivity	Human, Mouse
Conjugation	Unconjugated
Tested Applications	ICC, IF, IHC, WB
Immunogen	Recombinant fusion protein of human LIG1(NP_000225.1).
Preservatives	PBS with 0.02% sodium azide,50% glycerol,pH7.3.
Concentration	1 mg/ml
Storage	Maintain refrigerated at 2-8°C for up to 2 weeks. For long term storage store at -20°C in small aliquots to prevent freeze-thaw cycles.
Note	For research use only
Isotype	IgG
Clonality	Polyclonal
MW	140KDa
Uniprot ID	P18858
Dilution Range	WB: 1:500-2000, IHC-P: 1:50-200, IF/ICC: 1:50-200
Expiration Date	12 months from date of receipt.



Immunofluorescence analysis of MCF7 cell...



Western blot analysis of extracts of var...



Immunohistochemical analysis of formalin...