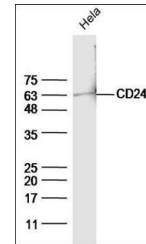


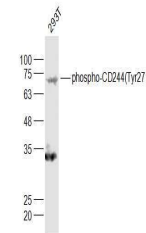
## Product Datasheet

### CD244 (phospho-Tyr266) antibody (orb4843)

|                            |  |
|----------------------------|--|
| <b>Description</b>         | CD244 (phospho-Tyr266) antibody  |
| <b>Species/Host</b>        | Rabbit   |
| <b>Reactivity</b>          | Human  |
| <b>Conjugation</b>         | Unconjugated   |
| <b>Tested Applications</b> | FC, WB   |
| <b>Immunogen</b>           | KLH conjugated Synthesised phosphopeptide derived from human CD244 around the phosphorylation site of Tyr271 (TI(p-Y)ED) |
| <b>Target</b>              | phospho-CD244 (Tyr271)   |
| <b>Preservatives</b>       | 0.01M TBS(pH7.4) with 1% rAlbumin, 0.03% Proclin300 and 50% Glycerol.  |
| <b>Form/Appearance</b>     | Liquid   |
| <b>Concentration</b>       | 1mg/ml   |
| <b>Storage</b>             | Shipped at 4°C. Store at -20 °C for one year. Avoid repeated freeze/thaw cycles.   |
| <b>Note</b>                | For research use only  |
| <b>Isotype</b>             | IgG  |
| <b>Clonality</b>           | Polyclonal   |
| <b>MW</b>                  | 38 kDa   |
| <b>Uniprot ID</b>          | <b>Q9BZW8</b>  |
| <b>Dilution Range</b>      | WB=1:500-2000, Flow-Cyt=1ug/Test, IHC-F=1:100-500, IF=1:100-500, ELISA=1:5000-10000                                      |
| <b>Expiration Date</b>     | 12 months from date of receipt.  |



Western blot analysis of extracts from h...



Western blot analysis of human 293T Cell...