

## Product Datasheet

### CETP antibody (orb48326)

**Description** Rabbit polyclonal to CETP

**Reactivity** Human, Mouse, Rat

**Conjugation** Unconjugated

**Tested Applications** IHC, WB

**Immunogen** Recombinant fusion protein of human CETP(NP\_000069.2).

**Preservatives** PBS with 0.02% sodium azide,50% glycerol,pH7.3.

**Storage** Maintain refrigerated at 2-8°C for up to 2 weeks. For long term storage store at -20°C in small aliquots to prevent freeze-thaw cycles.

**Note** For research use only

**Isotype** IgG

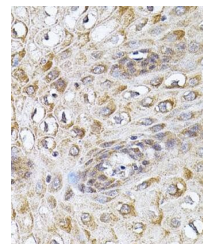
**Clonality** Polyclonal

**MW** 75kDa

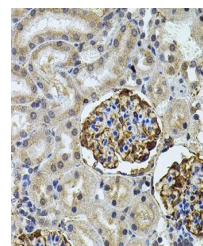
**Uniprot ID** [P11597](#)

**Dilution Range** WB: 1:500-2000, IHC-P: 1:50-200

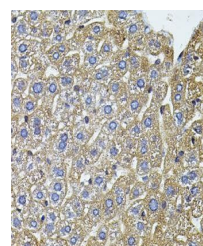
**Expiration Date** 12 months from date of receipt.



Immunohistochemical staining of rat kidn...



Immunohistochemical staining of human es...



Immunohistochemical staining of human st...