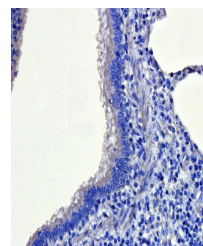


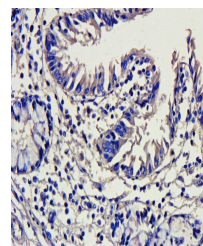
Product Datasheet

CD41 Antibody (orb4832)

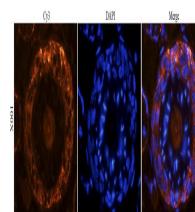
Description	CD41 Antibody
Species/Host	Rabbit
Conjugation	Unconjugated
Tested Applications	ICC, IF, IHC-P, WB
Immunogen	KLH conjugated synthetic peptide derived from human CD41. Please contact us for the exact immunogen sequence. The peptide is available as orb374776.
Target	CD41
Form/Appearance	10 mM PBS, 0.02% sodium azide
Concentration	- 100 µg (in 200 µl): 0.5 mg/ml- 200 µg (in 400 µl): 0.5 mg/ml
Storage	Store at 4°C for up to two weeks. For long term storage, aliquot and store at -20°C, avoid freeze/thaw cycles.
Note	For research use only
Isotype	IgG
Clonality	Polyclonal
Purity	Polyclonal antibodies are purified by peptide affinity chromatography
MW	20 kDa
Uniprot ID	P08514 , Q9QUM0
NCBI	21 , 034705 , 010575
Entrez	16399
Dilution Range	WB: 1:200-1000, IHC-P: 1: 100-500
Expiration Date	12 months from date of receipt.



Immunohistochemical staining of pig lung...



IHC-P image of pig large intestines tiss...



Immunofluorescence analysis of mouse ski...