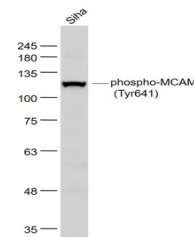


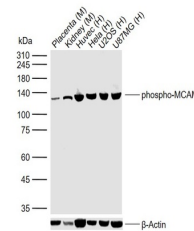
Product Datasheet

CD146 (phospho-Tyr641) antibody (orb4800)

Description	CD146 (phospho-Tyr641) antibody
Species/Host	Rabbit
Reactivity	Human, Mouse, Rat
Conjugation	Unconjugated
Tested Applications	WB
Immunogen	KLH conjugated Synthesised phosphopeptide derived from human MCAM around the phosphorylation site of Tyr641 (EK(p-Y)ID)
Target	phospho-MCAM (Tyr641)
Preservatives	0.01M TBS(pH7.4) with 1% rAlbumin, 0.03% Proclin300 and 50% Glycerol.
Form/Appearance	Liquid
Concentration	1mg/ml
Storage	Maintain refrigerated at 2-8°C for up to 2 weeks. For long term storage store at -20°C in small aliquots to prevent freeze-thaw cycles.
Note	For research use only
Isotype	IgG
Clonality	Polyclonal
MW	71 kDa
Uniprot ID	P43121
Dilution Range	WB=1:500-2000
Expiration Date	12 months from date of receipt.



Western blot:SiHa(Human) Cell;Primary:An...



Western blot:Lane 1:Mouse Placenta;Lane ...