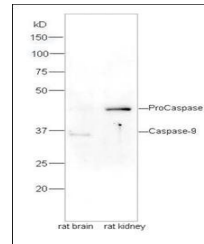


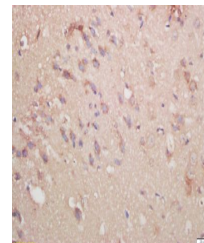
Product Datasheet

Caspase 9 (phospho-Ser196) antibody (orb4769)

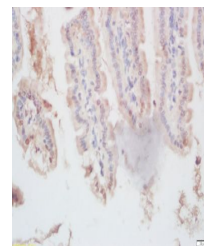
Description	Caspase 9 (phospho-Ser196) antibody
Species/Host	Rabbit
Reactivity	Human, Mouse, Rat
Conjugation	Unconjugated
Tested Applications	ICC, IHC-P, WB
Immunogen	KLH conjugated Synthesised phosphopeptide derived from human CASP9 around the phosphorylation site of Ser196 (FS(p-S)LH)
Target	Phospho-Caspase-9 (Ser196)
Preservatives	0.01M TBS(pH7.4) with 1% rAlbumin, 0.03% Proclin300 and 50% Glycerol.
Form/Appearance	Liquid
Concentration	1mg/ml
Storage	Shipped at 4°C. Store at -20 °C for one year. Avoid repeated freeze/thaw cycles.
Note	For research use only
Isotype	IgG
Clonality	Polyclonal
MW	35 kDa
Uniprot ID	P55211
Dilution Range	WB=1:500-2000, IHC-P=1:100-500, ICC=1:100, IHC-F=1:100-500, IF=1:100-500, ELISA=1:5000-10000
Expiration Date	12 months from date of receipt.



Western blot analysis of rat brain tissue...



Immunohistochemical staining of Mouse brain...



Immunohistochemical staining of mouse in...