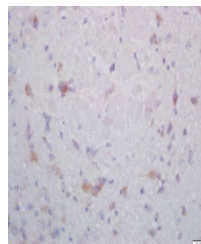


Product Datasheet

Caspase 6 (phospho-Ser257) antibody (orb4765)

Description	Caspase 6 (phospho-Ser257) antibody
Species/Host	Rabbit
Reactivity	Human, Mouse
Conjugation	Unconjugated
Tested Applications	FC
Immunogen	KLH conjugated Synthesised phosphopeptide derived from human Caspase 6 around the phosphorylation site of Ser257 (KV(p-S)QR)
Target	phospho-Caspase 6 (Ser257)
Preservatives	0.01M TBS(pH7.4) with 1% rAlbumin, 0.03% Proclin300 and 50% Glycerol.
Form/Appearance	Liquid
Concentration	1mg/ml
Storage	Shipped at 4°C. Store at -20 °C for one year. Avoid repeated freeze/thaw cycles.
Note	For research use only
Isotype	IgG
Clonality	Polyclonal
MW	11/33 kDa
Uniprot ID	P55212
Dilution Range	WB=1:500-2000, Flow-Cyt=1ug/Test, IHC-F=1:100-500, IF=1:100-500, ELISA=1:5000-10000
Expiration Date	12 months from date of receipt.



Immunohistochemical staining of Mouse br...