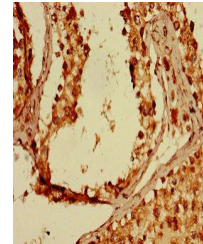


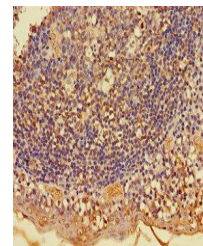
Product Datasheet

FKBP8 antibody (orb47627)

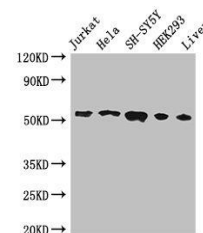
Description	FKBP8 antibody
Species/Host	Rabbit
Reactivity	Human, Mouse
Conjugation	Unconjugated
Tested Applications	ELISA, IHC, WB
Immunogen	Recombinant Human Peptidyl-prolyl cis-trans isomerase FKBP8 protein (58-190AA)
Target	FKBP8
Preservatives	Preservative: 0.03% Proclin 300. Constituents: 50% Glycerol
Form/Appearance	Liquid
Storage	Maintain refrigerated at 2-8°C for up to 2 weeks. For long term storage store at -20°C in small aliquots to prevent freeze-thaw cycles.
Note	For research use only
Isotype	IgG
Clonality	Polyclonal
Uniprot ID	Q14318
Dilution Range	WB:1:500-5000, IHC-P:1:20-200
Expiration Date	12 months from date of receipt.



Immunohistochemical staining of human te...



Immunohistochemical staining of human to...



Western blot analysis of Jurkat(lane 1),...