
Product Datasheet

CaMK2 alpha (phospho-Tyr231) antibody (orb4756)

Description

CaMK2 alpha (phospho-Tyr231) antibody

Species/Host

Rabbit

Reactivity

Human, Mouse, Rat

Conjugation

Unconjugated

Tested Applications

FC, IHC-P, WB

Immunogen

KLH conjugated Synthesised phosphopeptide derived from human CaMK2 alpha around the phosphorylation site of Tyr231 (GA(p-Y)DF)

Target

phospho-CaMK2 alpha (Tyr230)

Preservatives

0.01M TBS(pH7.4) with 1% rAlbumin, 0.03% Proclin300 and 50% Glycerol.

Form/Appearance

Liquid

Concentration

1mg/ml

Storage

Shipped at 4°C. Store at -20°C for one year. Avoid repeated freeze/thaw cycles.

Note

For research use only

Isotype

IgG

Clonality

Polyclonal

MW

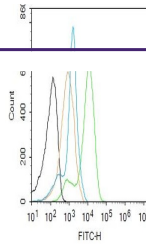
54 kDa

Uniprot ID
[Q9UQM7](#)
Dilution Range

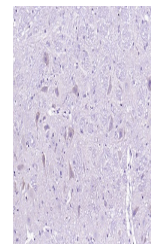
WB=1:500-2000, IHC-P=1:100-500, Flow-Cyt=2ug/Test, IHC-F=1:100-500, IF=1:100-500, ELISA=1:5000-10000

Expiration Date

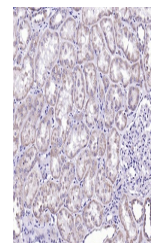
12 months from date of receipt.



Flow cytometry of K562. Primary Antibody ...



IHC-P analysis of rat cerebellum using p...



IHC-P analysis of Human kidney using p-C...