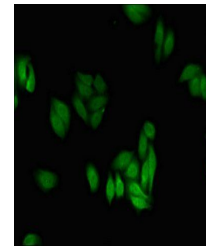


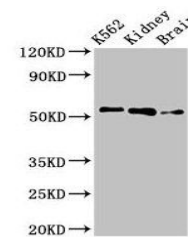
Product Datasheet

PFKFB2 antibody (orb46887)

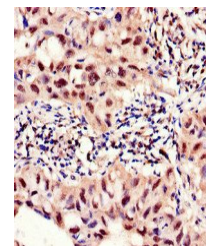
Description	PFKFB2 antibody
Species/Host	Rabbit
Reactivity	Human, Rat
Conjugation	Unconjugated
Tested Applications	ELISA, IF, IHC, WB
Immunogen	Recombinant Human 6-phosphofructo-2-kinase/fructose-2,6-bisphosphatase 2 protein (360-505AA)
Target	PFKFB2
Preservatives	Preservative: 0.03% Proclin 300. Constituents: 50% Glycerol
Form/Appearance	Liquid
Storage	Maintain refrigerated at 2-8°C for up to 2 weeks. For long term storage store at -20°C in small aliquots to prevent freeze-thaw cycles.
Note	For research use only
Isotype	IgG
Clonality	Polyclonal
Uniprot ID	O60825
Dilution Range	WB:1:200-5000, IHC-P:1:20-200, IF:1:50-200
Expiration Date	12 months from date of receipt.



Immunofluorescence analysis of HepG2 cel...



Western blot analysis of K562 whole cell...



Immunohistochemical staining of human lu...