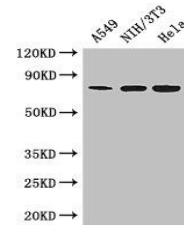


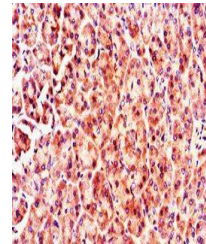
Product Datasheet

MX1 antibody (orb46855)

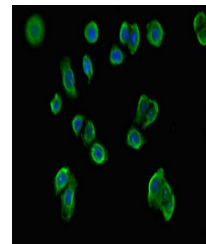
Description	MX1 antibody
Species/Host	Rabbit
Reactivity	Human, Mouse
Conjugation	Unconjugated
Tested Applications	ELISA, IF, IHC, IP, WB
Immunogen	Recombinant Human Interferon-induced GTP-binding protein Mx1 protein (7-172AA)
Target	MX1
Preservatives	Preservative: 0.03% Proclin 300. Constituents: 50% Glycerol
Form/Appearance	Liquid
Storage	Maintain refrigerated at 2-8°C for up to 2 weeks. For long term storage store at -20°C in small aliquots to prevent freeze-thaw cycles.
Note	For research use only
Isotype	IgG
Clonality	Polyclonal
Uniprot ID	P20591
Dilution Range	WB:1:1000-5000, IHC-P:1:20-200, IF:1:50-200, IP:1:200-2000
Expiration Date	12 months from date of receipt.



Western blot analysis of A549(lane 1), N...



Immunohistochemical staining of human pa...



Immunofluorescence analysis of PC-3 cell...