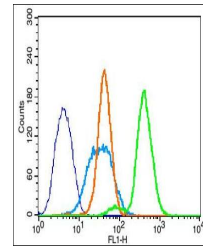


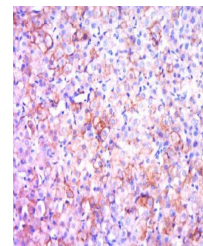
Product Datasheet

BCL2 (phospho-Thr129) antibody (orb4669)

Description	BCL2 (phospho-Thr129) antibody
Species/Host	Rabbit
Reactivity	Human, Mouse, Rat
Conjugation	Unconjugated
Tested Applications	FC, IHC-P, WB
Immunogen	KLH conjugated Synthesised phosphopeptide derived from human Bcl-2 around the phosphorylation site of Thr129 (FA(p-T)VV)
Target	Phospho-Bcl-2 (Thr129)
Preservatives	0.01M TBS(pH7.4) with 1% rAlbumin, 0.03% Proclin300 and 50% Glycerol.
Form/Appearance	Liquid
Concentration	1mg/ml
Storage	Shipped at 4°C. Store at -20 °C for one year. Avoid repeated freeze/thaw cycles.
Note	For research use only
Isotype	IgG
Clonality	Polyclonal
MW	26 kDa
Uniprot ID	P49950
Dilution Range	WB=1:500-2000, IHC-P=1:100-500, Flow-Cyt=1µg/Test, IHC-F=1:100-500, IF=1:100-500, ELISA=1:5000-10000
Expiration Date	12 months from date of receipt.



Flow cytometric analysis of K562 Cell us...



Immunohistochemical staining of rat ovar...