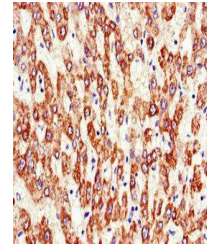


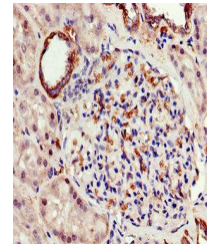
## Product Datasheet

### ATP5A1 antibody (orb46684)

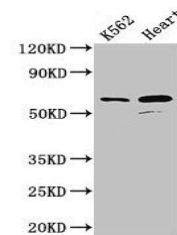
<b>Description</b>	ATP5A1 antibody
<b>Species/Host</b>	Rabbit
<b>Reactivity</b>	Human, Mouse, Rat
<b>Conjugation</b>	Unconjugated
<b>Tested Applications</b>	ELISA, IHC, IP, WB
<b>Immunogen</b>	Recombinant Human ATP synthase subunit alpha, mitochondrial protein (59-257AA)
<b>Target</b>	ATP5F1A
<b>Preservatives</b>	Preservative: 0.03% Proclin 300. Constituents: 50% Glycerol
<b>Form/Appearance</b>	Liquid
<b>Storage</b>	Upon receipt, store at -20°C or -80°C. Avoid repeated freeze.
<b>Note</b>	For research use only
<b>Isotype</b>	IgG
<b>Clonality</b>	Polyclonal
<b>Uniprot ID</b>	<b>P25705</b>
<b>Dilution Range</b>	WB:1:1000-5000, IHC-P:1:20-200, IP:1:200-2000
<b>Expiration Date</b>	12 months from date of receipt.



Immunohistochemical staining of human li...



Immunohistochemical staining of human ki...



Western blot analysis of HeLa whole cell...