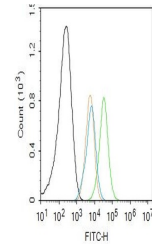


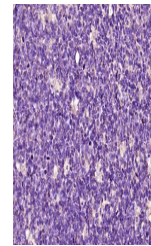
Product Datasheet

BCL2 (phospho-Ser70) antibody (orb4664)

Description	BCL2 (phospho-Ser70) antibody
Species/Host	Rabbit
Reactivity	Human
Conjugation	Unconjugated
Tested Applications	FC, IHC-P
Immunogen	KLH conjugated Synthesised phosphopeptide derived from rat Bcl-2 around the phosphorylation site of Ser70 (RT(p-S)PL)
Target	Phospho-Bcl-2 (Ser70)
Preservatives	0.01M TBS(pH7.4) with 1% rAlbumin, 0.03% Proclin300 and 50% Glycerol.
Form/Appearance	Liquid
Concentration	1mg/ml
Storage	Maintain refrigerated at 2-8°C for up to 2 weeks. For long term storage store at -20°C in small aliquots to prevent freeze-thaw cycles.
Note	For research use only
Isotype	IgG
Clonality	Polyclonal
MW	26 kDa
Uniprot ID	P49950
Dilution Range	IHC-P=1:100-500, Flow-Cyt=1ug/test, IHC-F=1:100-500, IF=1:100-500, ELISA=1:5000-10000
Expiration Date	12 months from date of receipt.



Flow cytometry of HL-60. Primary Antibody...



IHC-P analysis of human tonsil using Pho...