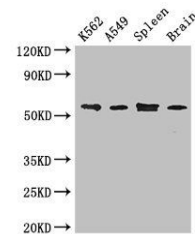


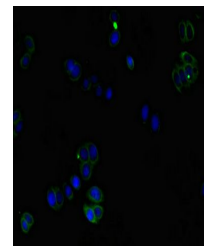
Product Datasheet

CORO1C antibody (orb46615)

Description	CORO1C antibody
Species/Host	Rabbit
Reactivity	Human, Mouse
Conjugation	Unconjugated
Tested Applications	ELISA, IF, WB
Immunogen	Recombinant Human Coronin-1C protein (351-464AA)
Target	CORO1C
Preservatives	Preservative: 0.03% Proclin 300. Constituents: 50% Glycerol
Form/Appearance	Liquid
Storage	Maintain refrigerated at 2-8°C for up to 2 weeks. For long term storage store at -20°C in small aliquots to prevent freeze-thaw cycles.
Note	For research use only
Isotype	IgG
Clonality	Polyclonal
Uniprot ID	Q9ULV4
Dilution Range	WB:1:2000-5000, IF:1:50-200
Expiration Date	12 months from date of receipt.



Western blot analysis of K562(lane 1), A...



Immunofluorescence analysis of HepG2 cel...