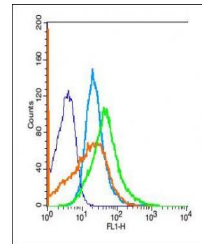


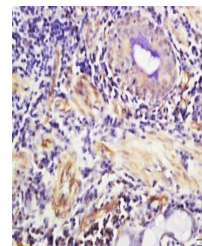
Product Datasheet

SCNN1B (phospho-Ser633) antibody (orb4660)

Description	SCNN1B (phospho-Ser633) antibody
Species/Host	Rabbit
Reactivity	Guinea pig, Human, Mouse
Conjugation	Unconjugated
Tested Applications	FC, WB
Immunogen	KLH conjugated Synthesised phosphopeptide derived from human SCNN1B around the phosphorylation site of Ser633 (IE(p-S)D)
Target	phospho-SCNN1B (Ser633)
Preservatives	0.01M TBS(pH7.4) with 1% rAlbumin, 0.03% Proclin300 and 50% Glycerol.
Form/Appearance	Liquid
Concentration	1mg/ml
Storage	Shipped at 4°C. Store at -20 °C for one year. Avoid repeated freeze/thaw cycles.
Note	For research use only
Isotype	IgG
Clonality	Polyclonal
MW	73 kDa
Uniprot ID	P51168
Dilution Range	WB=1:500-2000, Flow-Cyt=1µg/Test
Expiration Date	12 months from date of receipt.



Flow cytometric analysis of A549 cells
u...



Immunohistochemical staining of human
lu...