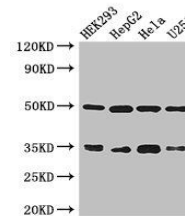


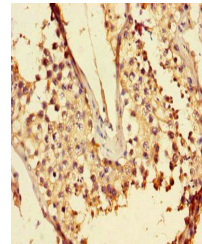
Product Datasheet

LZTFL1 antibody (orb46599)

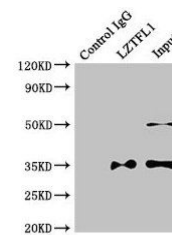
| | |
|----------------------------|---|
| Description | LZTFL1 antibody |
| Species/Host | Rabbit |
| Reactivity | Human |
| Conjugation | Unconjugated |
| Tested Applications | ELISA, IF, IHC, IP, WB |
| Immunogen | Recombinant Human Leucine zipper transcription factor-like protein 1 protein (116-299AA) |
| Target | LZTFL1 |
| Preservatives | Preservative: 0.03% Proclin 300. Constituents: 50% Glycerol |
| Form/Appearance | Liquid |
| Storage | Maintain refrigerated at 2-8°C for up to 2 weeks. For long term storage store at -20°C in small aliquots to prevent freeze-thaw cycles. |
| Note | For research use only |
| Isotype | IgG |
| Clonality | Polyclonal |
| Uniprot ID | Q9NQ48 |
| Dilution Range | WB:1:500-5000, IHC-P:1:20-200, IF:1:50-200, IP:1:200-2000 |
| Expiration Date | 12 months from date of receipt. |



Western blot analysis of HEK293(lane 1),...



Immunohistochemical staining of human te...



Immunoprecipitation analysis of HepG2 wh...