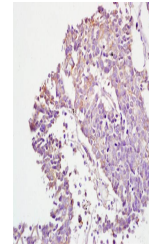


Product Datasheet

BAX (phospho-Ser184) antibody (orb4658)

Description	BAX (phospho-Ser184) antibody
Species/Host	Rabbit
Reactivity	Human, Mouse, Rat
Conjugation	Unconjugated
Tested Applications	FC, IHC-P, WB
Immunogen	KLH conjugated Synthesised phosphopeptide derived from human Bax around the phosphorylation site of Ser184 (TA(p-S)LT)
Target	phospho-Bax (Ser184)
Preservatives	0.01M TBS(pH7.4) with 1% rAlbumin, 0.03% Proclin300 and 50% Glycerol.
Form/Appearance	Liquid
Concentration	1mg/ml
Storage	Shipped at 4°C. Store at -20 °C for one year. Avoid repeated freeze/thaw cycles.
Note	For research use only
Isotype	IgG
Clonality	Polyclonal
MW	21 kDa
Uniprot ID	Q07812
Dilution Range	WB=1:500-2000, IHC-P=1:100-500, Flow-Cyt=3µg /test
Expiration Date	12 months from date of receipt.



Paraffin-embedded human lung carcinoma f...